

The watery roots of these two islands are firmly established and remain operative despite many decades of being seriously loved by millions of visitors. It's probably the miles of pristine, white, sandy beaches on Sanibel and Captiva islands that help maintain a general air of rest and relaxation. Both are a shell collector's dream. Both islands are accessible by car from the mainland and make no bones about being tourist havens. Snowbirds and even some spring breakers from across the country have responded in kind, and in droves. But the nearly 8,000 year 'round islanders have done a stellar job of balancing a driving desire for tourism while maintaining some of the small-town charms still here. Nearby Pine Island is especially low-key.

Thanks to the diversity of nature here, banking on ecotourism in recent years was a great choice — the area is full of beaches, nature preserves, bike trails and waterside activities. The islands' layout is so well spaced and thought-out that there always seems to be plenty of room for alluring shops, dining possibilities, resort spas and entertainment options. In short, there is simply no way to enjoy all that these singular islands have to offer in the span of a short stay, which is just one of the reasons boaters return time and again.

Mother Nature dictated a great deal of the subsequent history of Sanibel and Captiva, which were once united as one. A hurricane in 1926 tore through Captiva Island, making two separate islands: northern Captiva and southern Sanibel, with what is today known as Blind Pass separating the two. Five years earlier, another hurricane separated Captiva from what is now North Captiva, creating Redfish Pass and leaving the new island accessible only by water.




© SHORELINE AERIAL PHOTOGRAPHY

Looking northwest at Redfish Pass, created amid the wreckage of a hurricane in 1921.

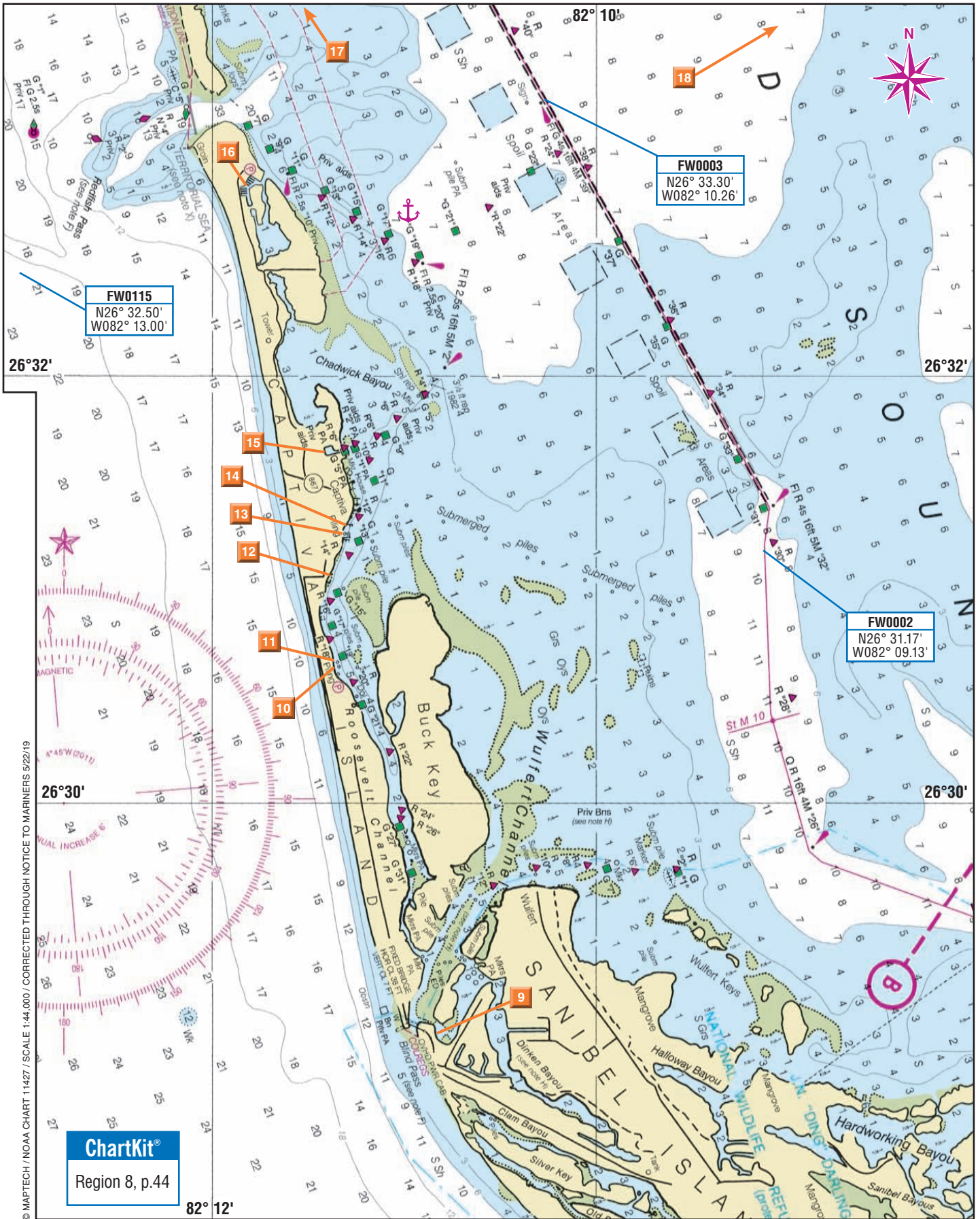
Most recently, Sanibel, Captiva, Pine Island and the smaller islands in Pine Island Sound have taken beatings from various 21st century hurricanes, with Irma in 2017 again inflicting noticeable damage. A more damaging 2004 hurricane left stands of trees in the region leveled, mangrove forests destroyed and hundreds of homes and resorts with serious water damage. A new, shallow (and non-navigable) inlet, locally known as Charley Pass, was created on North Captiva, temporarily parting the island into two sections. The inlet has since filled back in.

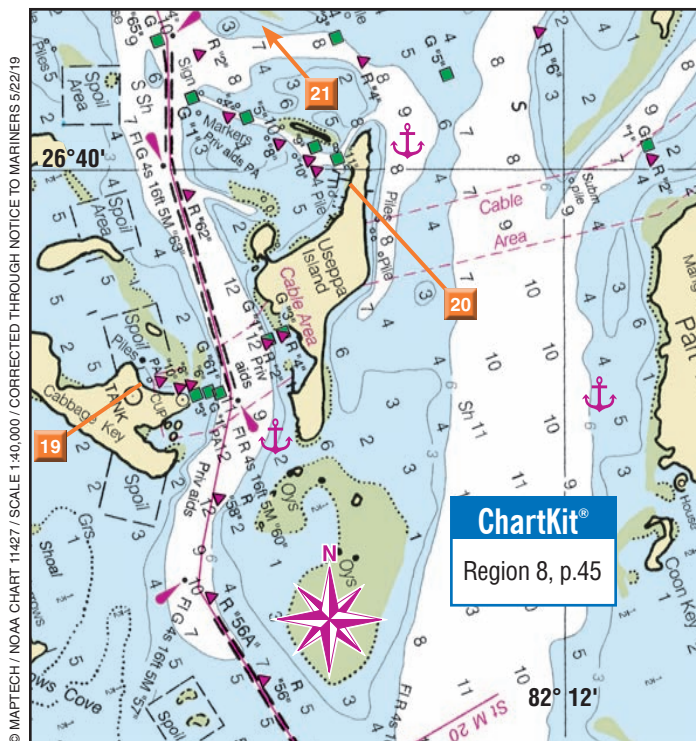
Today, locals are wary of hurricane-inflicted damage and that's resulted in many lands and even waters near the resorts being designated off limits to human traffic. The idea is natural barriers and vegetation do the best job protecting life and property, so it should all be left to intertwine without human interference. As a result, the islands themselves — especially

Tow Boat U.S. Info: 800-395-2628 Dispatch: 800-391-4869		DOCKAGE		SERVICES				SUPPLIES			AMENITIES			 MasterCard / VISA / Discover / AmEx Internet / Restaurant / Snack Bar Hotel / Pool / Tennis / Golf Marine / Groceries / Ice / Bait Fuel Brand Gas / Diesel Restrooms / Showers / Laundry / Pump-out			
		Approach / Dockside	Mooring	110V	220V	Ramp / Dinghy	Reel / Lift / Crane	Diesel / Wood	Repairs / Prop / Sail	Fiberglass / Electronics	PGD	WF	GD				
1	Sanibel Marina	239-472-2723	16/71	65/	Y/	70	6/6	W	◆▲50	T	PGD	WF	GD	All	RSL	IR	MVA
2	Waterfront Restaurant & Marina	239-283-0592		16/	Y/	58	6/6			DOCK-AND-DINE				R		R	All
3	Two Seas Marina	239-283-2494		19/				W	◆								
4	Monroe Canal Marina	239-282-8600		8/	Y/	30		W	◆▲50	R	T	RG	FE	GD	MIB	R	All
5	St. James Marina									R							
6	York Road Marine	239-283-1149		10/		65	6/6			L35	PR	GD	WF		M	R	MVD
7	Ragged Ass Saloon	239-282-1131			Y/					DOCK-AND-DINE				R			
8	Bob & Annie's Boatyard	239-283-3962				60	5/5			L35	PG	DF	FE		R		MV

Facilities continue, next page.

# Sanibel and Captiva Superyacht Destination





 **Things to See and Do**

Even the most dedicated walking enthusiast may want some wheels to explore this spread-out area. Sanibel alone is 12 miles long and 5 miles at its widest; skinny Captiva, which is connected to Sanibel by a small bridge, is 5 miles long; and across the sound, Pine Island is 17 miles in length. Bicycles, motor scooters and rental cars are widely available.





Approximately 23 miles of wonderful bike paths run the length of Sanibel (but not Captiva). Riding is easy since the islands are fairly flat, and rental places abound. Rental cars and taxis are two other handy ways to get from place to place. In all cases, don't expect to get anywhere fast on Sanibel or Captiva islands; the speed limit is 30 mph.

If your boat has a draft too deep (i.e., 5 feet or more) and you'd like to do a bit of island-hopping in Pine Island Sound, you can rent a power boat from **Jensen's Twin Palm Resort & Marina**, Captiva (239-472-5800); **Beach Bums Boat Rental**, Captiva (15951 Captiva Drive; 239-472-6336) and **Boat House Powerboat Rentals** (239-472-2531) at Sanibel Marina. Another alternative on Captiva, **Captiva Cruises** (11401 Andy Rosse Lane; 239-472-5300) runs half-day excursions to the out-islands as well as dolphin, wildlife and shelling cruises.

the portions dedicated to wildlife refuges — are as beautiful as ever, albeit still slightly rearranged by natural events. For visitors, that means many years of enjoying all sorts of attractions that have been here in the past.

**Sanibel and Captiva**

Powder-like sand, abundant shells and glorious sunsets make the 16-plus miles of Gulf Coast beaches the top attraction on Sanibel and Captiva. The area is second only to Australia's

		DOCKAGE		SERVICES		SUPPLIES		AMENITIES								
		Approach / Dockside Slips / Moorings	Offers Transient Slips / Moorings	110V / 220V	Hookups: Water / Cable TV	Ramp / Dinghy Dock / Launch Service	Repairs: Prop / Sail / Rigging / Electronics	Restrooms / Showers / Laundry / Pump-out	Internet / Restaurant / Snack Bar							
 Info: 800-395-2628 Dispatch: 800-391-4869  <b>Marine Facilities and Services</b>  <b>Superyacht Facility</b>		Total Number of Slips / Working VHF Channel Monitors / Working VHF Channel		110V / 220V Hookups: Water / Cable TV		Diesel / Repairs: Prop / Sail / Rigging / Electronics Diesel / Lift / Crane / Trailer: Capacity (tons) Ramp / Dinghy Dock / Launch Service		Restrooms / Showers / Laundry / Pump-out Marine / Groceries / Ice / Bait Gas / Diesel Fuel Brand		 MasterCard / VISA / Discover / AmEx Hotel / Pool / Tennis / Golf						
9	Castaways Marina	239-472-1112	12/	Y/	24	2/2	W	R	G	IB	RSL	HP	R	All		
10	Tween Waters Inn Island Resort & Spa p.377 	239-472-5161	16/72	46/	Y/	130	5/7	WC	◆▲50	R	GD	All	All	HPT	R	All
11	Captiva Island Yacht Club	239-472-4133									PRIVATE—RECIPROCAL PRIVILEGES					
12	Green Flash Waterfront Restaurant	239-472-3337			Y/	70	5/6				DOCK-AND-DINE					
13	Jensen's Twin Palm Resort & Marina	239-472-5800	16/14	15/	24	4/5	W	◆30		G	MIB	RL	H	IS	All	
14	McCarthy's Marina	239-472-5200		21/	Y/	26	4/3	W					R	S	All	
15	Bayside Marina	239-472-7611	/68	50/	28		W		L		PRIVATE					
16	South Seas Island Resort	888-777-3625	16/68		120	6/6	WC	◆▲100		GD	All	All	All	IR	All	
17	Barnacle Phil's Harbor Restaurant	239-472-1200		Y/	3/6						DOCK-AND-DINE					
18	Pine Island Commercial Marina	239-283-4110									COMMERCIAL USE ONLY; RAMP OPEN ON WEEKENDS					
19	Cabbage Key Inn	239-283-2278	16/11	Y/	95	7/7		◆▲50	D			I	RSL	R	All	
20	Useppa Island Club	239-283-1061	16/14		110	10/6	W	◆▲100			PRIVATE					
21	Cayo Costa State Park	941-964-0375		15/	Y/	30	4/4		R				RS	R		

Information in these listings is provided by the facilities themselves. An asterisk (\*) indicates we have confirmed the facility's existence, but it did not respond to our request for updated information.

Great Barrier Reef for the amazing bounty of beautiful shells. In fact, shelling is so popular that beachcombers in the bent-over position are said to be doing the “Sanibel Stoop.” Shellers also wade in the shallows to the east of the islands.

If you just have a passing interest in shells, there’s Sanibel’s **Bailey-Matthews National Shell Museum** (3075 Sanibel-Captiva Road; 239-395-2233), which will tell you everything you ever wanted to know about shells in the only museum of its kind in the United States, and features both local shells and collections from around the world. If you’d rather buy than “stoop,” visit **She Sells Seashells** (1157 Periwinkle Way; 239-472-6991), the island’s oldest shell emporium. To find your own on your own, we found **Bowman’s Beach**, on Sanibel Island, is considered by locals to be the best for shelling. It is also generally uncrowded during all but peak tourist season. If you are serious about shelling, get out early in the morning to increase your chances of finding something unusual. People scour the seashore here from dawn to dusk. Not all the best shells are found right along the surf; occasionally, a real gem will turn up amid the high tide debris line or along any sculpted edges cut into the dunes by storm tides.

Wildlife viewing also reigns supreme here, with manatees, dolphins, alligators, sea turtles and rare birds making their homes in Sanibel’s 6,300-plus acre **J.N. “Ding” Darling National Wildlife Refuge** (1 Wildlife Drive; 239-472-1100). Named for a Pulitzer Prize-winning editorial cartoonist and avid conservationist, the refuge is one of the nation’s largest mangrove ecosystems. Walk, drive, pedal or paddle through, but make sure to stop by the education center to view Darling’s political cartoons. Seventy to 100 years later, many still ring true.

In these preserved marshes, a canoe or kayak rental will be invaluable. There are also narrated tram tours and fishing charters through the refuge. While we haven’t tried these ourselves, we’ve been told you can also see parts of the refuge in your own dinghy. For a real look up-close and personal at the backwater creeks and wildlife typical of South Florida, many opt for a guided kayak tour.

Anglers who visit the preserve by car would do well to try their luck along the 4-mile **Wildlife Drive**. Along this road, you can catch tarpon up to 30 pounds, snook, sea trout and plenty of sheepshead, among other species. Shrimp bait, plastic swim baits and small tins are all you need to get started.

You may also enjoy visiting the nearby **Clinic for the Rehabilitation of Wildlife** (3883 Sanibel-Captiva Road; 239-472-3644) or the **Sanibel-Captiva Conservation Foundation** (3333 Sanibel-Captiva Road; 239-472-2329). Both welcome visitors while they continue their excellent work preserving both the flora and fauna of the area.

It’s best to explore sections of the **Great Calusa Blueway**, a 190-mile-long marked trail that meanders from Charlotte Harbor south through Pine Island Sound, Matlacha Pass and San Carlos Bay to Bonita Springs, by kayak, canoe or the like. It is home to heron, ibis, manatees, sea turtles and river otters. Several local outfitters offer rentals and tours, among them, the Fort Myers-based **Adventures in Paradise** (14341

Port Comfort Road; 239-472-8443) and in Captiva, there’s **Adventure Sea Kayak & SUP** (15951 Captiva Drive; 239-822-3337), which includes tours on standup paddleboards.

Shopping is always a high-priority pursuit on these two islands. There are dozens of stores and galleries selling clothing, crafts, jewelry, art, shell souvenirs and more, with prices ranging from reasonable to ridiculous. By the way, the **Sanibel & Captiva Islands Chamber of Commerce** (1159 Causeway Road; 239-472-1080) is an invaluable resource. The chamber’s free guidebook lists just about every shop, restaurant and vacation activity in the region, and is available at many participating businesses.

The eight-building **Sanibel Historical Museum and Village** (950 Dunlop Road; 239-472-4648) tells the story of the original settlers and includes the island’s old general store as well as an early post office and schoolhouse. Since 1979, **Big Arts** (900 Dunlop Road; 239-395-0900) has been Sanibel’s thriving performance and visual arts center, hosting theater, dance, concerts and gallery shows year-round. Movie lovers will find first-run films on Sanibel at **Island Cinema** (535 Tarpon Bay Road; 239-472-1701), and several restaurants offer live music and entertainment.

Out on little sister Captiva Island, look at the **Chapel by the Sea** (11580 Chapin Lane; 239-472-1646), which is a non-denominational church open seasonally, but always welcomes visitors. It was built in 1901 and formerly served as the island’s one-room schoolhouse. It also has a treasure trove of historical documents and photos of the island’s earliest years.

For sheer luxury, we recommend you pull your boat into one of the island’s resorts. You’ll be treated like royalty at **Tween Waters Inn Island Resort & Spa** (239-472-5161). Their marina is fitted with a fuel dock, and you can put visitors up in their comfortable rooms and cottages, where you can all enjoy a pool and spa, a restaurant for fine dining and another one for casual eats, a tackle shop and kayak/paddleboard rentals/tours right on the property. Don’t miss the hermit crab races held each week. Anglers enjoy its convenient location, too. Another splendid spot is nearby **South Seas Island Resort** (888-777-3625), which has it all — swimming, tennis, golf, beaches and water sports. Marina guests have complete access to the resort facilities.

As for the fishing in general, you’ll find sheepshead around nearly any structure in the waters around Captiva and Sanibel islands. There are also plenty of agreeable sea trout in the channels of Pine Island Sound, and snook at the docks and bridges. For redfish, work the edges of Pine Island with live shrimp or shrimp imitations and you should have little trouble connecting early or late in the day.

## Pine Island

Pine Island, the largest island on the west coast of Florida, is fringed with mangrove waterways and filled with mango groves. (There is even an annual **Mango Mania** festival if you happen to be here in July.) The island is low-key and charming with its Old Florida-style rural waterfront. To visit, you’ll need to harbor hop in a shallow-draft boat (5 feet, max)

or do your exploring by car. The towns of **Matlacha** (“Mat-luh-shay”), **Pine Island Center**, **Bokeelia** (“Bo-keel-ya”), **Pineland** and **St. James City** each offer a unique ambiance.

Matlacha has the charm of an old fishing village, with the addition of art galleries, gift shops, boutiques and seafood restaurants — all painted in bright, tropical colors. Don’t miss **Creative Coast**, Fridays and Saturdays on the second weekends of November through April, where you’ll find wonderful island-made artwork and crafts as well as the **Matlacha Hookers**. No, not what you think! These Hookers are civic-minded female anglers who run a fishing tournament to raise funds for local charities.

Pine Island Center is the island’s downtown with shops, grocery stores and fast-food restaurants. To the south, St. James City is a real boaters’ community and the island’s most populated area. Most homes have frontage on a vast array of canals that offer direct, if distant, access to the Gulf of Mexico. The Calusa Land Trust’s **St. Jude Nature Trail** offers a way to walk or bike through the wetlands. In Pineland, on the northwest side of the island, you can walk along the **Calusa Heritage Trail**, an archaeological site operated by the Florida Museum of Natural History, and the location of a 2,000-year-old Calusa village. The entire main street of Bokeelia, a fishing community on the island’s northern tip, has been named a historic district, with several buildings from the early 1900s.

Fishing charters, water taxis and tour boats run from Pine Island to Cabbage Key, Cayo Costa, Captiva, North


Captiva and Sanibel Island from several locations including **Four Winds Marina** (239-283-0250) and **Jug Creek Marina** (239-283-3331) and Safe Harbor’s **Pineland Marina** (239-283-3593), all in Bokeelia. Refer to the *Charlotte Harbor and Punta Gorda* chapter for more information and for their locations on the chart.

**The Out Islands**

**Cabbage Key**, **Cayo Costa** and the **Useppa islands** are special because they can only be visited by boat. As noted previously, tour boats leave from Captiva and Pine Island, but it may be more fun to visit on your own.

The **Cabbage Key Inn** (239-283-2278) is the main attraction on the tiny island. This funky pub/restaurant has a spectacular view and it’s surrounded by rustic cottages. Rumor has it that some guy named Buffett wrote a song about cheeseburgers and paradise after having lunch at Cabbage Key. Almost every square inch of interior space has been wallpapered with dollar bills signed by patrons — tens of thousands of them! Some of the posts in the restaurant are spongy to the touch due to the many layers of money. The owners will take any fallen bills to the bank for donations to local charities.

The naturalists’ heaven **Cayo Costa State Park** (941-964-0375) features about 9 miles of shell-filled beaches, a pine forest and nature trails with an amazing array of wildlife. Camping cabins are available for a small fee for those who



**THE PERFECT PLACE TO TIE UP.  
AND NOT BE TIED DOWN.**

Welcome to The Marina at Tween Waters Inn Island Resort & Spa—your best value with the lowest overnight slip rates on Florida’s west coast. Plus as Captiva Island’s top TripAdvisor resort, you enjoy access to our three pools, three restaurants, recreation, spa, entertainment and warm hospitality. Gas, diesel, electric, showers, supplies, food, value and resort amenities—all yours. **Tween-Waters.com | 239.472.5161 X440**

**'TWEEN WATERS INN**  
ISLAND RESORT & SPA  
CAPTIVA ISLAND, FLORIDA

can't get enough swimming, shelling and fishing in just one day. You can visit by private boat or take the **Tropic Star** (239-283-0015) ferry from the Jug Creek Marina in Bokeelia. Reservations are recommended.

Useppa Island is an ultra-exclusive, private island that welcomes visitors only under certain circumstances. Rich in history, it has a fabulous 100-year-old inn and restaurant — the **Collier Inn** — beautiful homes and cottages, complete resort services and a full-service marina, all upscale.

The **Useppa Island Historical Society Museum** (239-283-9600), officially named the **Barbara Sumwalt Museum**, showcases the history of Useppa Island from the ice age to the present. Signature pieces are forensic restorations of the Useppa Man and Woman, taken from skeletons unearthed during archaeological digs. More modern relics include military garb and gear from 1960 to 1961 when the CIA trained Cubans to form Brigade 2506 for the failed Bay of Pigs invasion.

The **Useppa Island Club** stresses the private nature of the island, and says only members and guests or those seeking membership are welcome, but exceptions are sometimes made. Marina dockage is sometimes available to visiting yachts (up to 110 feet with a draft of 6 feet or less) with prior arrangements. Call or hail the harbormaster (239-283-1061, ext. 163 or VHF 16) in advance. About the only way to visit trouble-free is via **Captiva Cruises** (239-472-5300), which runs daily trips for lunch and museum visits.

## Restaurants and Provisions

In Sanibel, **Jac Island Bar & Grille** (1223 Periwinkle Way; 239-472-1771) has replaced Jacaranda with a pub-like atmosphere to complement its central location. If you're craving a view, grab a ride to the **Thistle Lodge** (2255 West Gulf Drive; 239-472-9200), overlooking the Gulf.

Brush up on your nautical flags before you have breakfast or lunch at the casual **Gramma Dot's Seaside Saloon** (239-472-8138), which is part of the Sanibel Marina. We saw someone negotiate a free glass of wine when she correctly spelled out the flags on the server's shirt. The food is comforting and delicious.

Other favorites near the marina are the **East End Deli** (359 Periwinkle Way; 239-472-9622) and the **Lighthouse Café** (362 Periwinkle Way; 239-472-0303) right next door. For great fried or grilled seafood, pull into the **Lazy Flamingo** (1036 Periwinkle Way; 239-472-6939). It's a local favorite and you can get any fish you catch cooked to order.

**Cheeburger Cheeburger** (1975 Periwinkle Way; 239-472-6111) is a few miles down the road, and the **Island Cow** (2163 Periwinkle Way; 239-472-0606) is nearby. There's free Wi-Fi at the casual **Sanibel Bean** (2240 Periwinkle Way; 239-395-1919) and fish tacos or various shrimp concoctions lead the list at **Doc Fords Rum Bar and Grille** (2500 Island Inn Road; 239-472-8311).

Provisions are easy enough to find on Sanibel, with numerous markets and convenience stores, including **Jerry's Foods** (1700 Periwinkle Way; 239-472-9300) and **Bailey's General Store** (2477 Periwinkle Way; 239-472-1516).

Captiva Island hotspots include the dock-and-dine **The Green Flash Waterfront Restaurant** (239-472-3337) and the **Mucky Duck** (11546 Andy Rosse Lane; 239-472-3434), just west of McCarthy's Marina, both of which feature sunset watching to complement your fine food. Then there's the nearby **Bubble Room** (15001 Captiva Drive; 239-472-5558), which is filled with toys, trains and lots of kitschy decor, along with great food and fun. There's also the **Keylime Bistro** (11509 Andy Rosse Lane; 239-395-4000) with an outdoor patio and live music.

Tween Waters Inn has many dockside amenities and offer a variety of in-house dining options, from casual to fancy. The nightlife at **The Crow's Nest** is said to be a great time, and **Old Captiva House** has recently been renovated, combining the classic with the contemporary, with a new menu boasting "Florida-fresh favorites."

Get your groceries and sundries at the **Island Store** (11500 Andy Rosse Lane; 239-472-2374) by McCarthy's and Jensen's, or the **Santiva General Store** (6406 Sanibel-Captiva Road; 239-472-5556) at Blind Pass by Castaways Marina, where the two islands almost meet.

On Pine Island you'll find a number of dock-and-dine restaurants specializing in fresh seafood presented with low-key island flair, including the **Waterfront Restaurant & Marina** (239-283-0592) in St. James City and **Bert's Bar and Grill** (4271 Pine Island Road; 239-282-3232) to the north in Matlacha. There is a supermarket in Pine Island Center.

## Charts

Use Maptech ChartKit Region 8, Pages 39, 44 and 45; NOAA charts 11427 (1:40,000) and 11426 (1:80,000).

## Navigation and Anchorages

Before you plan your trip to Sanibel, Captiva or any of the islands in Pine Island Sound, please read the navigation advice in the preceding chapter, which has important information about the ICW and the twisting channels that run through the shallow waters of both **Pine Island Sound** and **San Carlos Bay**. Boats with a draft greater than 5 feet will face challenges and may do best taking the Gulf route and ducking in to one of the marinas on the mainland or on the tips of Sanibel and Captiva islands.

You can visit the **Sanibel Marina** (239-472-2723) at the south end of the island without passing through Sanibel Island Causeway Bridge. Approaching **from the south**, be sure to give the shoals off **Point Ybel** a wide berth and then follow the marked channel through **San Carlos Bay** to Fl R 4s 16ft 5M "6" near the start of the Okeechobee Waterway. About 1.5 miles west-southwest is Fl R 6s 16ft 5M "2." Once Fl R 6s 16ft 5M "2" is abeam, you will see the Sanibel Marina's entrance channel on the shore before you reach the bridge.

Marine facilities and restaurants on **Captiva Island** are located south of **Chadwick Bayou** in **Roosevelt Channel**. Approach this area between the ICW's G "37" (Statute Mile 13) and R "38," then head southwest to Fl R 2.5s 16ft 5M "2" at the Roosevelt Channel entrance. This channel is primarily



© SHORELINE AERIAL PHOTOGRAPHY

Reach your eyes toward the blue skies and spot the blue roofs of Tween Waters Inn Island Resort & Spa for a stay full of splendor and relaxation.

used by vessels with a draft of 5 feet or less. Inside, you'll love your stay at  **Tween Waters Inn Island Resort & Spa**  (239-472-5161). The facility has 7-foot depths at their docks and they accommodate superyachts up to 130 feet. Its amenities ashore will spoil you. Gas and diesel fuel, ice, laundry and plenty of recreational opportunities are available. Call ahead for up-to-date advice about any hazards coming inside.

West of Fl G 4s 16ft 4M "39" (Statute Mile 13.7) on the ICW is the marked entrance channel to  **South Seas Island Resort**  (239-472-5111). This is also the route to take to  **Redfish Pass** , which requires local knowledge. In the past, the channel from the ICW has shoaled, so be sure to call the dockmaster for the latest information before approaching. South Seas has all the amenities you'd expect from a luxurious retreat plus gas and diesel fuel.

### Pine Island






**To reach Pine Island from San Carlos Bay**, follow the ICW to Statute Mile 5, where a channel leads to  **St. James City** . Small craft frequent this area, and locals tell us it is tight for bigger boats. Ditto Pine Island's other ports.

**To reach Matlacha via Matlacha Pass**, follow the winding well-marked channel to the north of G "1" near  **Big Sister Key**  and  **Picnic Island**  in San Carlos Bay.

Facilities and attractions at  **Pineland**  and  **Bokeelia**  on Pine Island's north end may be reached by following the ICW to Fl R 4s 16ft 5M "52," where a channel goes off to the northeast. The channel to Pineland starts just north of  **Part Island** .

To reach Bokeelia, you'll pass G "7" Priv to port at  **Patricio Island**  before setting a northeasterly course for Fl R 4s 16ft

5M "8." Past the light, follow an eastward course along the north side of Bokeelia Island toward G "1," a private marker indicating access into Bokeelia.

If you prefer to anchor in these waters, you'll find a cove south of the ICW in the   **J.N. "Ding" Darling National Wildlife Refuge**  on Sanibel that offers good holding ground in 4 to 6 feet of water, but there is nowhere close to land a dinghy. Other popular anchorages are east of the ICW near   **Useppa Island** , wherever the charted depths and conditions permit. In westerly winds, boats sometimes anchor inside the tips of   **North Captiva Island**  and   **Cayo Costa**  on either side of Captiva Pass. Do note, these spots are unprotected from easterly winds and subject to powerful currents. Another favorite is   **Pelican Bay** , west of  **Punta Blanca Island**  near the north end of Cayo Costa and just south of Boca Grande Pass. More details are in the preceding chapter.

### Superyacht Facilities

**Tween Waters Inn Island Resort & Marina**  239-472-5161

### Shoreside and Emergency Services

**Airport:**  Southwest Florida Int'l 239-590-4800

**Coast Guard:**  911 or VHF 16

**Florida Fish and Wildlife Conservation Commission:**   
—888-404-3922

**Tow Service:**

—Sea Tow 800-4SEATOW or VHF 16

—TowBoatU.S. 800-391-4869 or VHF 16 